



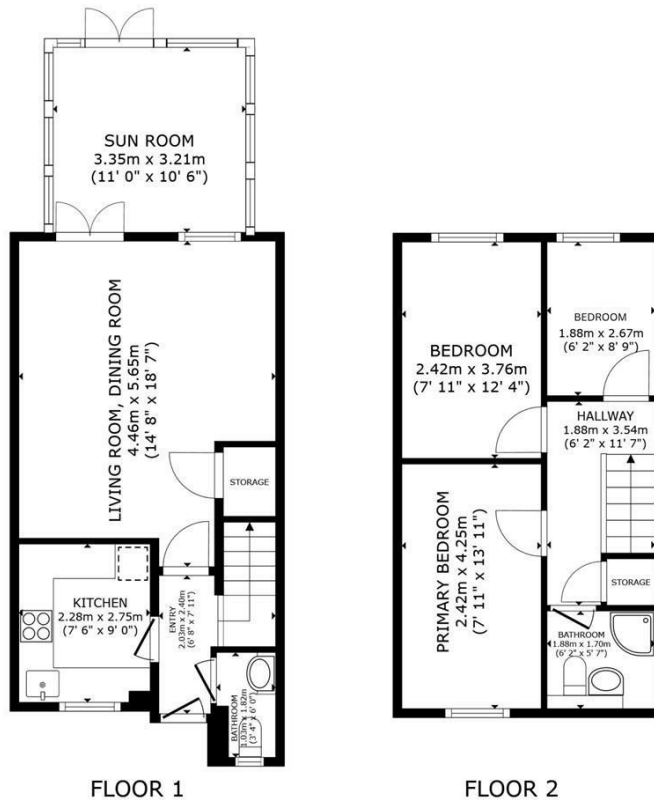
35 OAK TREE WAY
HORSHAM, RH13 6EQ

£500,000
FREEHOLD

Eltons is delighted to present to the market this attractive and well presented three bedroom semi detached property

ELTONS

Estate Agents



GROSS INTERNAL AREA
 FLOOR 1 48.2 m² (519 sq.ft.) FLOOR 2 35.7 m² (384 sq.ft.)
 TOTAL : 83.8 m² (902 sq.ft.)
 SIZES AND DIMENSIONS ARE APPROXIMATE, ACTUAL MAY VARY.



Energy Efficiency Rating		Current	Potential
Very energy efficient - lower running costs			
(92 plus) A			
(81-91) B			
(69-80) C			
(55-68) D			
(39-54) E			
(21-38) F			
(1-20) G			
Not energy efficient - higher running costs			
England & Wales		EU Directive 2002/91/EC	



Agents Note: Whilst every care has been taken to prepare these particulars, they are for guidance purposes only. All measurements are approximate and are for general guidance purposes only and whilst every care has been taken to ensure their accuracy, they should not be relied upon and potential buyers/tenants are advised to recheck the measurements

Eltons Estate Agents Horsham
 13 - 15 Queen Street
 Horsham
 West Sussex
 RH13 5AA

01403 299 771
 sales@eltons.co.uk
 eltons.co.uk

ELTONS
 Estate Agents